







## 4-5

- 68008 Highboard *High board*  
 ↳ 243,2 cm ↳ 120,5 cm ↳ 39,6 cm  
 R3 – Lack Olivgrau *Olive grey lacquer*  
 ↳ Push to open *Push to open*
- 93818 Couchtisch CUBE *Coffee table CUBE*  
 ↳ 120,0 cm ↳ 40,0 cm ↳ 75,0 cm  
 NN – Nussbaum Nova *Walnut nova*
- 69719 Wohnkombination *Living room combination*  
 ↳ 363,2 cm ↳ 182,1 cm ↳ 49,2 cm  
 R6 – Lack Seidengrau HG *Silk grey lacquer HG*  
 NN – Nussbaum Nova *Walnut nova*  
 ↳ Push to open *Push to open*

## 6-7

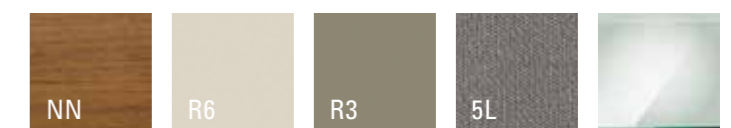
- 69721 Vitrine *Display cabinet*  
 ↳ 153,2 cm ↳ 190,9 cm ↳ 39,6 cm  
 R6 – Lack Seidengrau HG *Silk grey lacquer HG*  
 ↳ Push to open *Push to open*
- 93826 Esstisch CUBE *Dinner table*  
 ↳ 180,0 cm ↳ 75,0 cm ↳ 95,0 cm  
 NN – Nussbaum Nova *Walnut nova*
- 8× 93807 Stuhl R5 mit Kreuzgestell *Chair R5 with criss-cross base*  
 ↳ 59,0 cm ↳ 88,0 cm ↳ 56,5 cm  
 5L – Stoff *Fabric Ocean Silver*
- 69722 Sideboard *Sideboard*  
 ↳ 273,2 cm ↳ 76,1 cm ↳ 39,6 cm  
 R6 – Lack Seidengrau HG *Silk grey lacquer HG*  
 ↳ Push to open *Push to open*
- 75903 Wandbord *Wall board*  
 ↳ 180,0 cm ↳ 8,2 cm ↳ 20,6 cm  
 NN – Nussbaum Nova *Walnut nova*

## 8.1

- 69720RT Regalkombination als Raumteiler  
*Shelf combination room divider*  
 ↳ 320,3 cm ↳ 260,0 cm ↳ 36,2 cm  
 NN – Nussbaum Nova *Walnut nova*  
 ↳ Push to open *Push to open*

## 8.2

- 93801 Stuhl R5 *Chair R5*  
 ↳ 59,0 cm ↳ 87,0 cm ↳ 56,5 cm  
 NN – Nussbaum Nova *Walnut nova*  
 5L – Stoff *Fabric Ocean Silver*
- 83747 Couchtisch mit Kufen *Coffee table runners*  
 ↳ 120,0 cm ↳ 39,6 cm ↳ 75,0 cm  
 NN – Nussbaum Nova *Walnut nova*







## 16-17

- 69741 Korpusselement mit Metallgestell  
*Carcass element with metal base frame*  
 ↳ 78,2 cm ↳ 139,7 cm ↳ 39,6 cm  
 R5 – Lack Brillantgrau HG *Diamond grey lacquer HG* ✕  
 ↳ Push to open Push to open
- 69739 Vitrine *Display cabinet*  
 ↳ 234,2 cm ↳ 218,6 cm ↳ 42,3 cm  
 LW – Lack Weiß *White lacquer* ◇  
 ↳ Push to open Push to open
- 93827 Esstisch CUBE *Dinner table CUBE*  
 ↳ 200,0 cm ↳ 75,0 cm ↳ 95,0 cm  
 LW – Lack Weiß *White lacquer* ◇  
 Q3 – Feinschliff Grigio *Fine sanded grigio* ✕
- 6x 93813 Stuhl R5 mit Vierfußgestell *Chair R5 with four-leg frames*  
 ↳ 59,0 cm ↳ 88,0 cm ↳ 56,5 cm  
 1P – Leder *Leather* Hermes Djerba ✕

- 69740 Korpusselement mit Metallgestell  
*Carcass element with metal base frame*  
 ↳ 123,2 cm ↳ 139,7 cm ↳ 39,6 cm  
 R7 – Lack Rosewood *Rosewood lacquer* ◇  
 ↳ Push to open Push to open
- 69743 Regal als Raumteiler *Shelf room divider*  
 ↳ 101,6 cm ↳ 281,0 cm ↳ 26,6 cm  
 Q3 – Feinschliff Grigio *Fine sanded grigio* ✕
- 69742 Regal als Raumteiler *Shelf room divider*  
 ↳ 68,7 cm ↳ 281,0 cm ↳ 26,6 cm  
 Q3 – Feinschliff Grigio *Fine sanded grigio* ✕

## 18-19

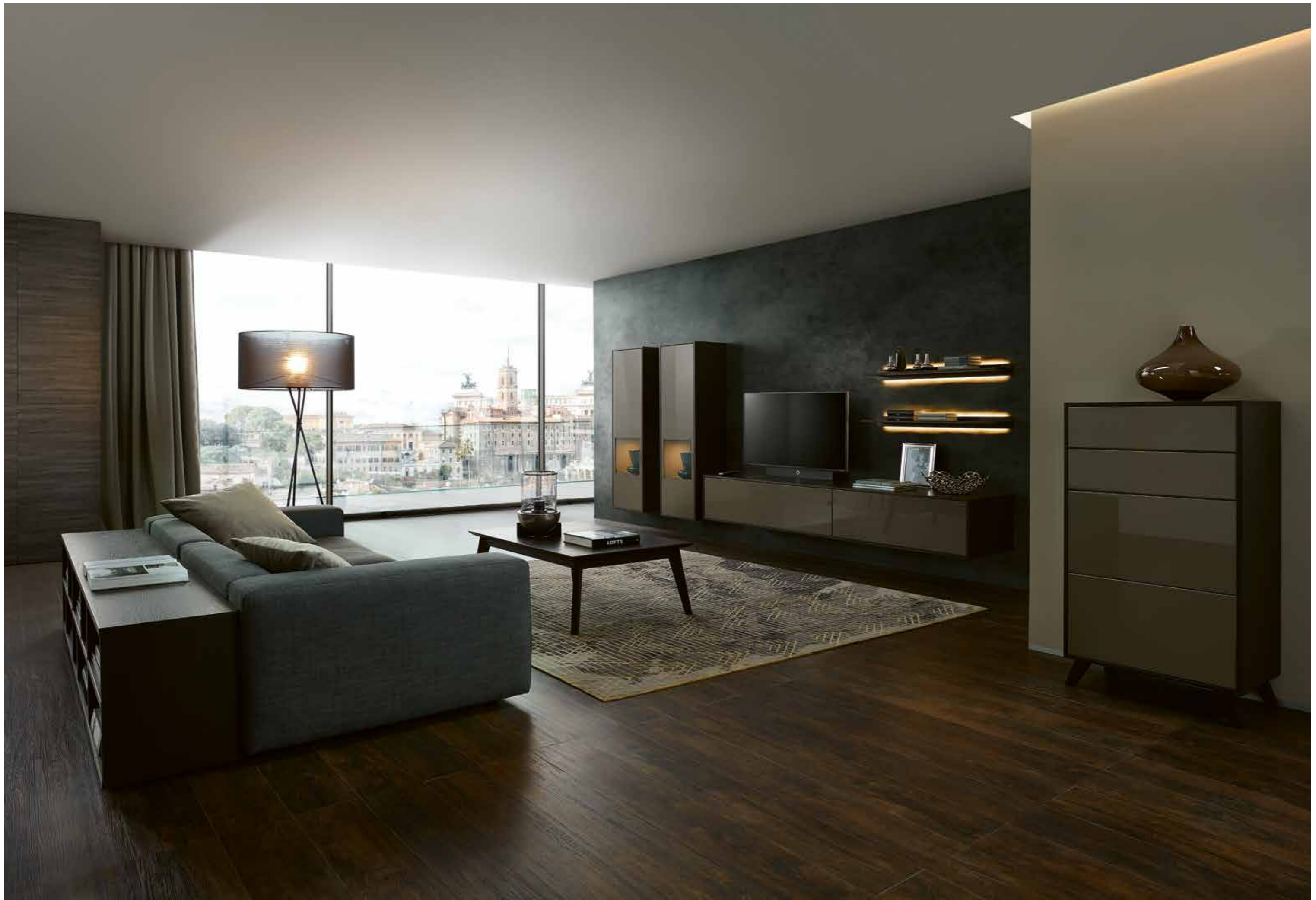
- 69744 Wohnkombination *Living room combination*  
 ↳ 363,2 cm ↳ 179,2 cm ↳ 49,2 cm  
 R5 – Lack Brillantgrau HG *Diamond grey lacquer HG* ✕  
 R5 – Lack Brillantgrau *Diamond grey lacquer* ◇  
 ↳ Push to open Push to open
- 93818 Couchtisch CUBE *Coffee table CUBE*  
 ↳ 120,0 cm ↳ 40,0 cm ↳ 75,0 cm  
 R5 – Lack Brillantgrau *Diamond grey lacquer* ◇  
 Q3 – Feinschliff Grigio *Fine sanded grigio* ✕

- freie. Schrankkombination *Cabinet combination*  
 Planung ↳ 340,0 cm ↳ 260,0 cm ↳ 39,6 cm  
 R5 – Lack Brillantgrau *Diamond grey lacquer* ✕  
 Q3 – Feinschliff Grigio *Fine sanded grigio* ✕  
 ↳ Push to open Push to open
- 69740 Korpusselement mit Metallgestell  
*Carcass element with metal base frame*  
 ↳ 123,2 cm ↳ 139,7 cm ↳ 39,6 cm  
 R8 – Lack Oxidrot *Oxide red lacquer* ◇  
 ↳ Push to open Push to open

















## 38–39

- 76476 Korpuselement *Carcass element*  
 ↳ 63,2 cm ↳ 120,5 cm ↳ 39,6 cm  
 R1 – Lack Reseda *Reseda lacquer* ◊  
 ↳ Push to open *Push to open*
- 69493 Vitrine *Display cabinet*  
 ↳ 279,2 cm ↳ 218,6 cm ↳ 42,3 cm  
 OB – Asteiche Bourbon *Knotty oak bourbon* ◊  
 ↳ R2 – Lack Espresso *Espresso lacquer* ◊  
 ↳ Push to open *Push to open*
- 92461 Esstisch *Dinner table*  
 ↳ 200,0 cm ↳ 75,4 cm ↳ 95,0 cm  
 OB – Asteiche Bourbon *Knotty oak bourbon* ◊  
 ↳ R2 – Lack Espresso *Espresso lacquer* ◊
- 6× 93561 Stuhl R4 *Chair R4*  
 ↳ 58,0 cm ↳ 82,2 cm ↳ 62,6 cm  
 OB – Asteiche Bourbon *Knotty oak bourbon* ◊  
 ↳ 4B – Velours *Velours Cloud Stonecrop* ◊

## 40–41

- 68008 Highboard *Highboard*  
 ↳ 243,2 cm ↳ 121,9 cm ↳ 42,3 cm  
 R1 – Lack Reseda *Reseda lacquer* ◊  
 ↳ Push to open *Push to open*
- 75907 Wandbord *Wall shelf*  
 ↳ 240,0 cm ↳ 8,2 cm ↳ 20,6 cm  
 OB – Asteiche Bourbon *Knotty oak bourbon* ◊
- 69502 Regaleckkombination *Corner shelf combination*  
 ↳ 443,4 × 353,4 cm cm ↳ 250,9 cm ↳ 55,2 cm  
 OB – Asteiche Bourbon *Knotty oak bourbon* ◊  
 ↳ R2 – Lack Espresso *Espresso lacquer* ◊  
 ↳ Push to open *Push to open*
- 92454 Couchtisch *Coffee table*  
 ↳ 120,0 cm ↳ 75,0 cm ↳ 41,3 cm  
 OB – Asteiche Bourbon *Knotty oak bourbon* ◊  
 ↳ 4B – Velours *Velours Cloud Stonecrop* ◊

## 42.1

- 69496 Wohnkombination *Living room combination*  
 ↳ 333,2 cm ↳ 208,5 cm ↳ 49,2 cm  
 OB – Asteiche Bourbon *Knotty oak bourbon* ◊  
 ↳ R2 – Lack Espresso *Espresso lacquer* ◊  
 ↳ Push to open *Push to open*
- 68866 Regal *Shelf*  
 ↳ 110,8 cm ↳ 250,9 cm ↳ 26,4 cm  
 OB – Asteiche Bourbon *Knotty oak bourbon* ◊
- 92454 Couchtisch *Coffee table*  
 ↳ 120,0 cm ↳ 75,0 cm ↳ 41,3 cm  
 OB – Asteiche Bourbon *Knotty oak bourbon* ◊
- 76477 Korpuselement *Carcass element*  
 ↳ 84,2 cm cm ↳ 121,8 cm ↳ 42,3 cm  
 R1 – Lack Reseda *Reseda lacquer* ◊  
 ↳ Push to open *Push to open*

## 42.2

- 92452 Couchtisch *Coffee table*  
 ↳ 95,0 cm ↳ 41,3 cm ↳ 95,0 cm  
 OB – Asteiche Bourbon *Knotty oak bourbon* ◊
- 93561 Stuhl R4 *Chair R4*  
 ↳ 58,0 cm ↳ 82,2 cm ↳ 62,6 cm  
 OB – Asteiche Bourbon *Knotty oak bourbon* ◊  
 ↳ 5B – Stoff *Fabric Ocean Curry* ◊









- 69494 Wohnkombination *Living room combination*  
 ↳ 378,2 cm ↳ 161,6 cm ↳ 49,2 cm  
 LH – Lack Platingrau HG *Platinum grey lacquer HG*  
 OA – Asteiche *Knotty oak*  
 ↳ Push to open *Push to open*
- 92452 Couchtisch *Coffee table*  
 ↳ 95,0 cm ↳ 41,3 cm ↳ 95,0 cm  
 OA – Asteiche *Knotty oak*

## 46–47

- 69169 Wohnkombination *Living room combination*  
 ↳ 318,2 cm ↳ 182,1 cm ↳ 49,2 cm  
 ES – Eiche Sand *Sand oak*  
 LY – Lack Grau HG *Grey lacquer HG*  
 ↳ Push to open *Push to open*
- 92461 Esstisch *Dinner table*  
 ↳ 200,0 cm ↳ 75,4 cm ↳ 95,0 cm  
 ES – Eiche Sand *Sand oak*  
 LY – Lack Grau *Grey lacquer*
- 6× 92657 Stuhl R3 *Chair R3*  
 ↳ 56,0 cm ↳ 82,2 cm ↳ 59,0 cm  
 ES – Eiche Sand *Sand oak*  
 11 – Leder *Leather Hermes nero*

- 76476 Korpuselement *Carcass element*  
 ↳ 63,2 cm ↳ 120,5 cm ↳ 39,6 cm  
 R1 – Lack Reseda *Reseda lacquer*  
 ↳ Push to open *Push to open*

## 48

- freie Wohnwandregalkombination *Living room shelf combination*  
 Planung ↳ 440,6 cm ↳ 567,7 cm ↳ 49,2 cm  
 ES – Eiche Sand *Sand oak*  
 LY – Lack Grau *Grey lacquer*  
 ↳ Push to open *Push to open*
- 92452 Couchtisch *Coffee table*  
 ↳ 95 cm ↳ 41,3 cm ↳ 95 cm  
 ES – Eiche Sand *Sand oak*

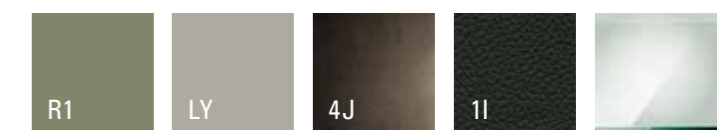
## 49

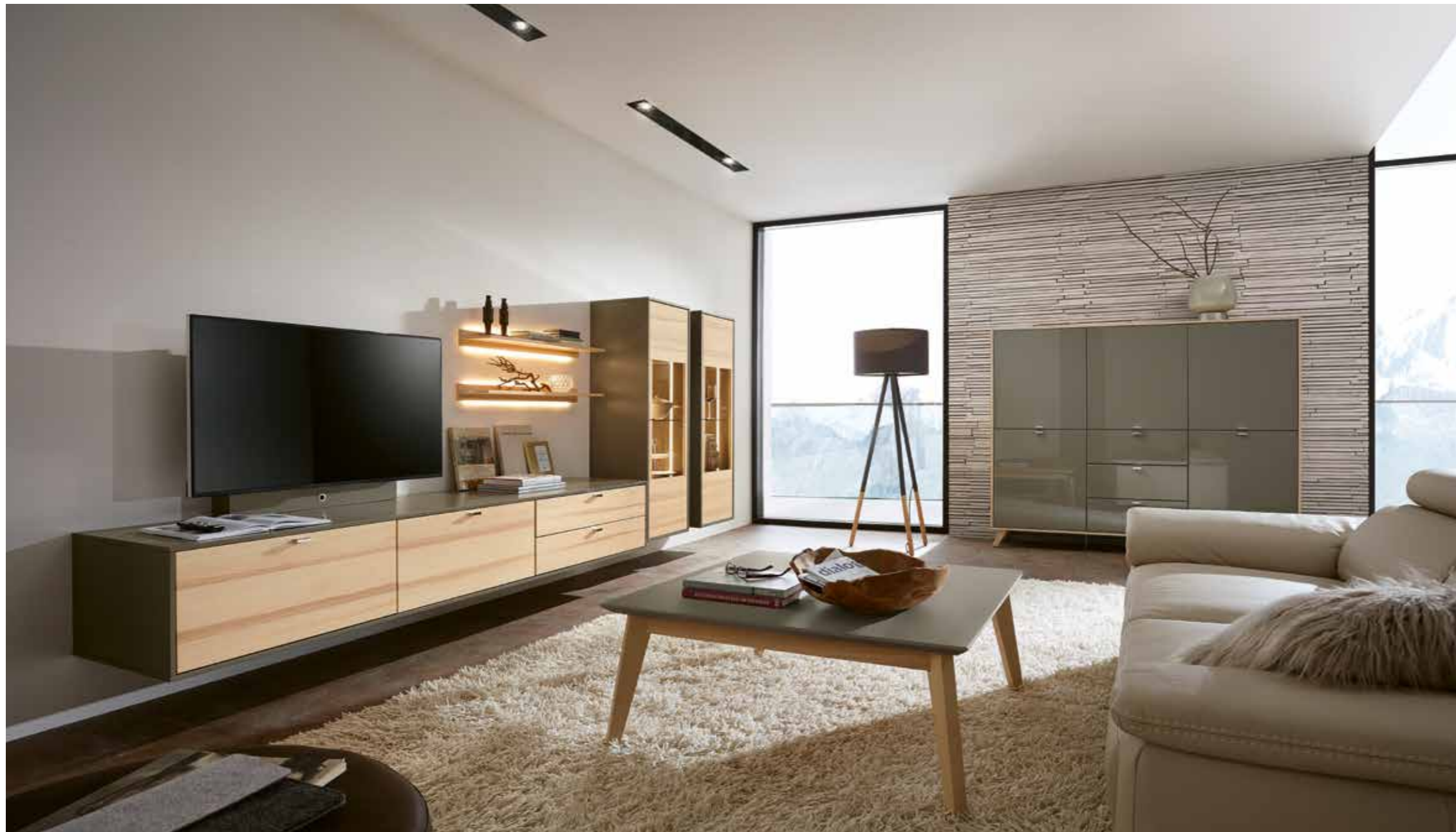
- 68008 Highboard mit Füßen *Highboard with legs*  
 ↳ 243,2 cm ↳ 121,9 cm ↳ 42,3 cm  
 R1 – Lack Reseda *Reseda lacquer*  
 ↳ Push to open *Push to open*



## 44–45

- 69495 Regal *Shelf*  
 ↳ 195,0 cm ↳ 250,9 cm ↳ 49,2 cm  
 OA – Asteiche *Knotty oak*  
 LH – Lack Platingrau *Platinum grey lacquer*  
 OA – Asteiche *Knotty oak*
- 93561 Stuhl R4 *Chair R4*  
 ↳ 58,0 cm ↳ 82,2 cm ↳ 62,6 cm  
 OA – Asteiche *Knotty oak*  
 4J – Velours *Velours Cloud Wood*





## 50.1

- 68025G Wohnkombination *Living room combination*  
 ↳ 363,2 cm ↳ 144,0 cm ↳ 49,2 cm  
 P6 – Lack Taupe *Taupe lacquer*  
 KE – Kernesche *Core ash*  
 ↳ H4 – Chrom glänzend *Shiny chrome*
- 92451 Couchtisch *Coffee table*  
 ↳ 75,0 cm ↳ 41,3 cm ↳ 75,0 cm  
 P6 – Lack Taupe *Taupe lacquer*  
 KE – Kernesche *Core ash*
- 68027 Highboard *Highboard*  
 ↳ 183,2 cm ↳ 155,7 cm ↳ 39,6 cm  
 P6 – Lack Taupe HG *Taupe lacquer HG*  
 KE – Kernesche *Core ash*  
 ↳ H4 – Chrom glänzend *Shiny chrome*

## 50.2

- 68025G Wohnkombination *Living room combination*  
 ↳ 363,2 cm ↳ 144,0 cm ↳ 49,2 cm  
 P6 – Lack Taupe *Taupe lacquer*  
 KE – Kernesche *Core ash*  
 ↳ H4 – Chrom glänzend *Shiny chrome*
- 92451 Couchtisch *Coffee table*  
 ↳ 75,0 cm ↳ 41,3 cm ↳ 75,0 cm  
 P6 – Lack Taupe *Taupe lacquer*  
 KE – Kernesche *Core ash*
- 92656 Stuhl R3 *Chair R3*  
 ↳ 56,0 cm ↳ 82,5 cm ↳ 59,0 cm  
 KE – Kernesche *Core ash*
- 92458 Esstisch *Dinner table*  
 ↳ 170,0 cm ↳ 75,4 cm ↳ 95,0 cm  
 P6 – Lack Taupe *Taupe lacquer*  
 KE – Kernesche *Core ash*
- 68027 Highboard *Highboard*  
 ↳ 183,2 cm ↳ 155,7 cm ↳ 39,6 cm  
 P6 – Lack Taupe HG *Taupe lacquer HG*  
 KE – Kernesche *Core ash*  
 ↳ H4 – Chrom glänzend *Shiny chrome*


















## 52-53

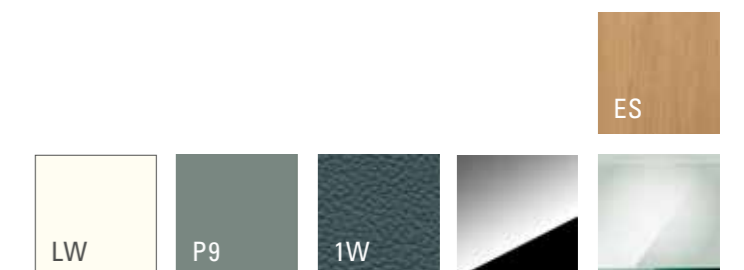
- 68873RT Raumteiler mit TV-Drehpaneel *Room divider w. TV swivel panel*  
 ↳ 206,6 cm ↳ 250,9 cm ↳ 36,2 cm  
 LW – Lack Weiß *White lacquer*   
 ↳ Push to open *Push to open*
- 76477 Korpuselement *Carcass element*  
 ↳ 78,2 cm ↳ 120,5 cm ↳ 120,5 cm  
 P9 – Lack Agave HG *Agave lacquer HG* 
- 92656 Stuhl R3 mit Armlehne *Chair R3 with armrest*  
 ↳ 56,0 cm ↳ 82,5 cm ↳ 59,0 cm  
 ES – Eiche Sand *Sand oak*   
 1W – Leder *Leather Hermes Whale* 
- 92459 Esstisch *Dinner table*  
 ↳ 180,0 cm ↳ 75,4 cm ↳ 95,0 cm  
 ES – Eiche Sand *Sand oak* 

## 54-55

- 68001 Wohnkombination *Living room combination*  
 ↳ 228,2 cm ↳ 250,9 cm ↳ 49,2 cm  
 ES – Eiche Sand *Sand oak*   
 LW – Lack Weiß *White lacquer*   
 ↳ Push to open *Push to open*
- 68016 Highboard *Highboard*  
 ↳ 138,2 cm ↳ 120,5 cm ↳ 39,6 cm  
 ES – Eiche Sand *Sand oak*   
 P9 – Lack Agave *Agave lacquer*   
 ↳ Push to open *Push to open*
- 75900 Wandbord *Wall shelf*  
 ↳ 135,0 cm ↳ 8,2 cm ↳ 20,6 cm  
 ES – Eiche Sand *Sand oak* 
- 92452 Couchtisch *Coffee table*  
 ↳ 95,0 cm ↳ 41,0 cm ↳ 95,0 cm  
 P9 – Lack Agave *Agave lacquer* 
- 92656 Stuhl R3 mit Armlehne *Chair R3 with armrest*  
 ↳ 56,0 cm ↳ 82,5 cm ↳ 59,0 cm  
 ES – Eiche Sand *Sand oak* 
- 92459 Esstisch *Dinner table*  
 ↳ 180,0 cm ↳ 75,4 cm ↳ 95,0 cm  
 ES – Eiche Sand *Sand oak* 

## 56-57

- 68010 Vitrine *Display cabinet*  
 ↳ 153,2 cm ↳ 190,9 cm ↳ 39,6 cm  
 P9 – Lack Agave *Agave lacquer*   
 ↳ H4 – Chrom glänzend *Shiny chrome* 



LW

P9

1W

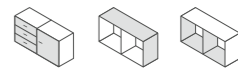
ES



**Front + Korpus Front + Carcass**

- |   |   |  |  |
|---|---|--|--|
| LW Lack Weiß <i>white lacquer</i>         | LC Lack Crema <i>crema lacquer</i>      | R6 Lack Seidengrau <i>silk grey l.</i> | R5 L. Brillantgrau <i>diamond grey l.</i>  |
| LY Lack Grau <i>grey lacquer</i>          | P6 Lack Taupe <i>taupe lacquer</i>      | R3 Lack Olivgrau <i>olive grey l.</i>  | LH Lack Platingrau <i>platinum grey l.</i> |
| R4 Lack Cashmere <i>cashmere l.</i>       | S1 Lack Macchiata <i>macchiata l.</i>   | LT Lack Terra <i>terra lacquer</i>     | R2 Lack Espresso <i>espresso l.</i>        |
| LS Lack Schwarz <i>black lacquer</i>      | LG Lack Graphit <i>graphite lacquer</i> | LR Lack Aubergine <i>aubergine l.</i>  | DR Lack Dark Red <i>dark red l.</i>        |
| R8 Lack Oxidrot <i>oxide red lacquer.</i> | LZ Lack Ziegelrot <i>brick lacquer</i>  | R7 Lack Rosewood <i>rosewood l.</i>    | S2 Lack Marill <i>marill lacquer</i>       |
| R1 Lack Reseda <i>reseda lacquer</i>      | P8 Lack Ocean <i>ocean lacquer</i>      | P9 Lack Agave <i>agave lacquer</i>     | P4 Lack Mint <i>mint lacquer</i>           |

Alle Lacke auch in Hochglanz erhältlich  
All finishes are also available in high-gloss type



**Front + Korpus furniert Front + Carcass veneered**

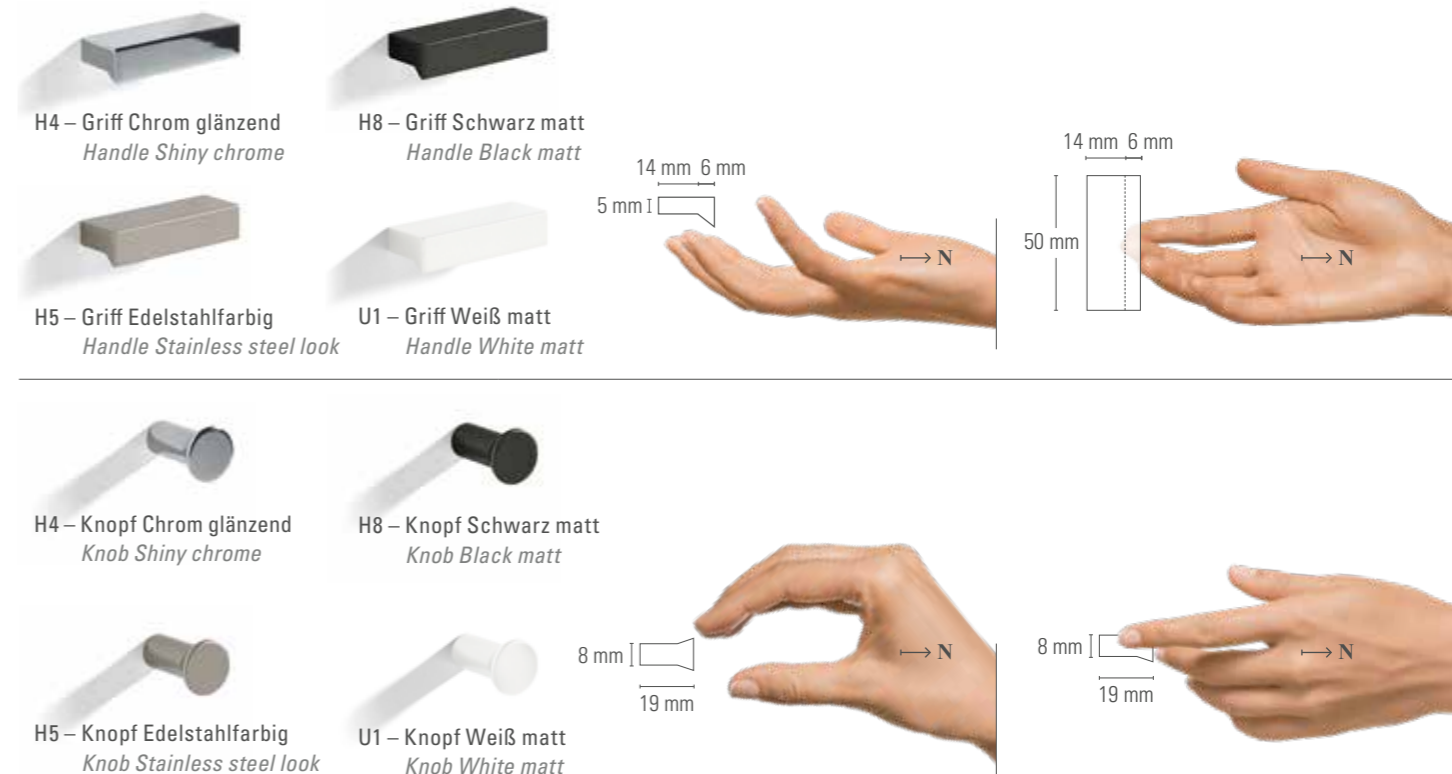
- |                                     |   |                                      |                                     |
|-------------------------------------|---|--------------------------------------|-------------------------------------|
| KE Kernesche <i>Core ash</i>        | ES Eiche Sand <i>Sand oak</i>                 | OA Asteiche <i>Knotty oak</i>        | BK Kernbuche <i>Beech heartwood</i> |
| NN Nussbaum Nova <i>Walnut nova</i> | OB Asteiche Bourbon <i>Knotty oak bourbon</i> | AN Eiche Graphit <i>Graphite oak</i> |                                     |

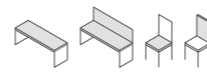
**Akzentausführung: Feinschliff Accent finishes: Fine sanded**

Q2 Feinschliff Bianco <i>Fine sanded Bianco</i>	Q3 Feinschliff Grigio <i>Fine sanded Grigio</i>
---	---

**Innenausführung: Dekor Interior finish: Décor**

**Griffe Handles**





1A – Bianco	1P – Djerba	1B – Ivory	1S – Betulla	1N – Sand	1G – Mocca	1L – Lever
1K – Choco	1T – Smog	1I – Nero	1H – Bruin	1M – Anthracite	1R – Merlin	1D – Bordo
1C – Red	1U – Cotto	1Q – Yellow	1F – Verde	1E – Oceanblue	1W – Whale	

Velours CLOUD Velours CLOUD

4E – Salt	4D – Beige	4K – Toffee	4J – Wood	4L – Coffee	4I – Steel	4M – Plum
4A – Ember	4Q – Wheat	4V – Oliv	4N – Seeweed	4B – Stonecrop	4F – Breeze	4G – Bottle
4H – Blueberry						

Flachgewebe OCEAN Flat woven fabric OCEAN

5E – Blanc	5F – Cream	5D – Taupe	5I – Linen	5M – Macaron	5G – Curry	5O – Copper
5B – Ruby	5C – Grape	5N – Moss	5L – Silver	5J – Iron	5H – Coal	5K – Night
5A – Ebony						

Flachgewebe WILLOW Flat woven fabric WILLOW

6O – Champagne	6C – Granola	6F – Shadow	6I – Opal	6L – Sapphire	6B – Powder	6A – Bronze
6H – Granite	6E – Green Smoke	6D – Horizon	6G – Merlot	6J – Chestnut	6K – Russet	6N – Forest
6M – Crown Blue						

Beispielartikel Sample articles

	1R Unterteile* lower elem.*		1,5R Elemente* elements*				2R Elemente* elements*										
B H T	W H D	60 41 40	60 41 50	60 41 50	37,5 59 40	75 59 40	75 59 50	105 59 40	60 59 50	105 59 50	105 59 50	45 77 40	75 77 40	75 77 40	90 77 40	120 77 50	105 77 50
Breite	width	75–150	75–90	75–135	45–75	90	90	120–150	75–90	120–135	120–135	60–75	90	90			120–135

	2,5R Elemente* elements*				3R Elemente* elements*				4R Elemente* elements*									
B H T	W H D	45 95 40	45 95 40	45 95 40	75 95 40	75 95 40	105 95 40	37,5 112 40	45 112 40	45 112 40	120 112 40	90 112 40	37,5 147 40	45 147 40	45 147 40	45 147 40	45 147 40	75 147 40
Breite	width	37,5–60	60–75	60–75	90	90	120–135	45–60	60–75	60–75			45–75	37,5–75	60–75	60–75	60–75	90

	5R Elemente // elements				6R Elemente elements				6R Kleiderschränke wardrobes			1,5R-6R Eckelemente corner elements						
B H T	W H D	37,5 183 40	45 183 40	45 183 40	75 183 40	75 183 40	105 183 40	37,5 218 40	45 218 40	45 218 40	45 218 40	75 218 40	90 218 40	75 218 40	45 218 40	90 218 40	90 218 40	77,1x77,1 59–218 40
Breite	width	45–60	60	60–75	90	90	120–135	45–60	60	60	60–75	90	90	90	90	90	90	86,7x86,7 61–218 50

	1R Hängeelem. hanging elem.		1,5R Hängeelemente hanging elements		2R Hängeelemente hanging elements		3R Hängeelemente hanging elements		3,5R Hängeelemente hanging elements		4R Hängeelem. hanging elem.							
B H T	W H D	60 38 40	45 38 40	75 56 40	75 56 40	75 56 50	105 56 50	45 74 36	90 74 36	75 74 36	45 109 36	75 109 36	45 109 36	37,5 127 36	45 127 36	90 127 36	37,5 144 36	45 144 36
Breite	width	75–150	60–150	90	90	60–150	120–150	60	90	90	60	60	60	45–60	60	90	45–60	60

	4R Hängeelemente hanging elements		4R Zwischenbauhängeelemente intermediate hanging elements		5R Zwischenbauhängeelemente intermediate hanging elements		2R-2,5R Wandspiegel wall mirrors		4R-7R Schieberegale sliding shelves								
B H T	W H D	45 162 36	90 162 36	75 162 36	75 162 36	45 144 36	45 144 36	75 144 36	45 179 36	45 179 36	90 179 36	60 74 5	60 92 5	63 148 19	63 183 19	63 218 19	63 254 19
Breite	width	60	90	90	90	60	60	90	60	60	60	75–240	75–240	78	78	78	78

	Abdeckblätter cover sheets		Korpusfüße carcass feet		Wangen side plates		Wandborde wall boards		TV-Element TV-element		Schreibplatte writing plate		Couchtisch coffee table		Esstische dinner tables		Stuhl chair		
B H T	W H D		90 17 30/40		2,9 max.427,7 26		120 17 20		70 22 10		75 52 50		75 120 42 75		75 120 42 75		170 77 95	170 65,6 95	56 83 59
B H T	W H D		45–270		T D36		B W60–240				B W90–180		95 42 95		95 42 95		B W180–190	B W180–200	
B H T	W H D				T D46								100 42 75		100 42 65				

\* Auch in Komforttiefe 49,2 cm erhältlich • Alle Angaben in cm • Für einen vollständigen Überblick über alle lieferbaren Typen wenden Sie sich bitte an den Fachhandel • Abweichung im Design, in technischer Ausführung und Druckfehler vorbehalten; Grundlage aller Lieferungen ist unsere Preis-/Typenliste.  
 \* Also available in comfort depth of 49,2 cm • All specifications in cm • For a complete overview of all available types please contact an authorised dealer • Subject to changes in design, technical execution and printing errors.  
 All deliveries based on our price/type list.

Beleuchtung: Sie können Ihr Möbel mit umfangreichen Beleuchtungsoptionen ausstatten: LEDs mit einer angenehmen Lichttemperatur in den Wandborden und Glaskanten sowie als Spots in den Vitrinen. Besonders komfortabel können Sie die verschiedenen Beleuchtungen mit der neuen 5-Kanal-Funkfernbedienung steuern.

Lighting: You can choose from extensive lighting options for your furniture – LEDs with a pleasant light temperature in the wall boards and glass edges as well as spots in the cabinets. The new 5-channel radio remote control allows for a particularly comfortably control of the various lighting systems.



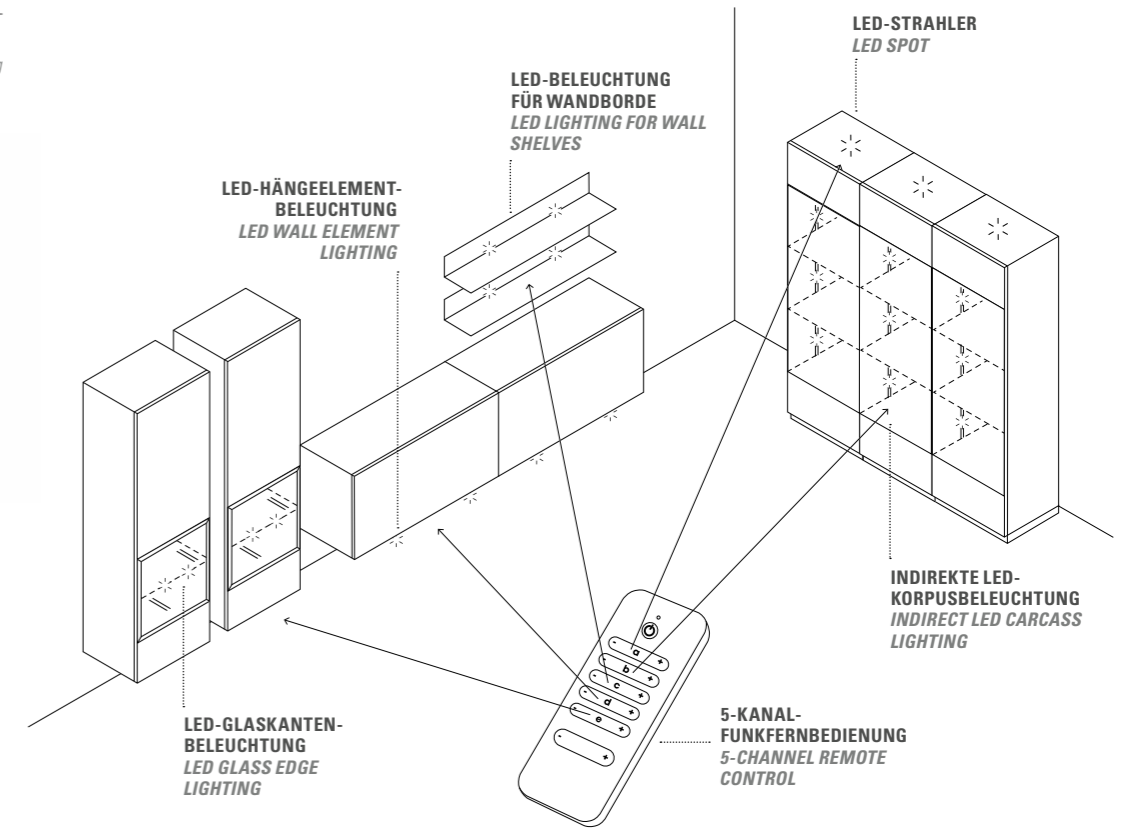
Das Wandbord lässt sich stimmungsvoll in Szene setzen.\*  
The wall board can be highlighted in a particularly atmospheric way.\*



\*Die Leuchten enthalten LED-Lampen, die innerhalb der Energieklasse E bis F liegen. Die LED-Lampen können nicht ausgetauscht werden.  
\*The lamp is equipped with energy class E to F LEDs. The LEDs cannot be replaced.

Auch für ein atmosphärisches Licht im Regalboden gibt es eine Lösung.\*  
There is also a solution for equipping shelves with atmospheric lighting.\*

Mit der Funkfernbedienung steuern Sie ganz bequem die einzelnen Beleuchtungskomponenten in Ihren Möbeln. It is easy to operate the individual lighting components of your furniture with the remote control.

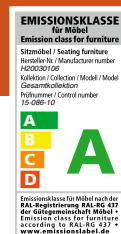


Von außen nicht zu erkennen: Die Komfort-Funktion wird beim Öffnen erkennbar. Invisible from the outside: the comfort function becomes evident on opening.

Komfort-Tablarauszug: Mit dem Komfort-Tablarauszug können Sie wertvollen Stauraum in Sideboard und Schrank nutzen. Die Auszüge kommen Ihnen beim Öffnen der Tür entgegen, so dass Sie bequem von oben hineingreifen und Sachen verstauen können – damit gehören schlecht zugängliche Ecken im Schrank der Vergangenheit an.  
Comfort pull-out tray: The comfort pull-out tray enables you to use the valuable storage space in the sideboard and cupboard. The pull-outs move towards you as the door is opened so you can easily access them from above and put things away – making hard-to-reach cupboard corners a thing of the past.



rmw-wohnmobel.de



RMW Wohnmöbel GmbH & Co. KG  
Karl-Schiller-Straße 5 | 33397 Rietberg  
GERMANY